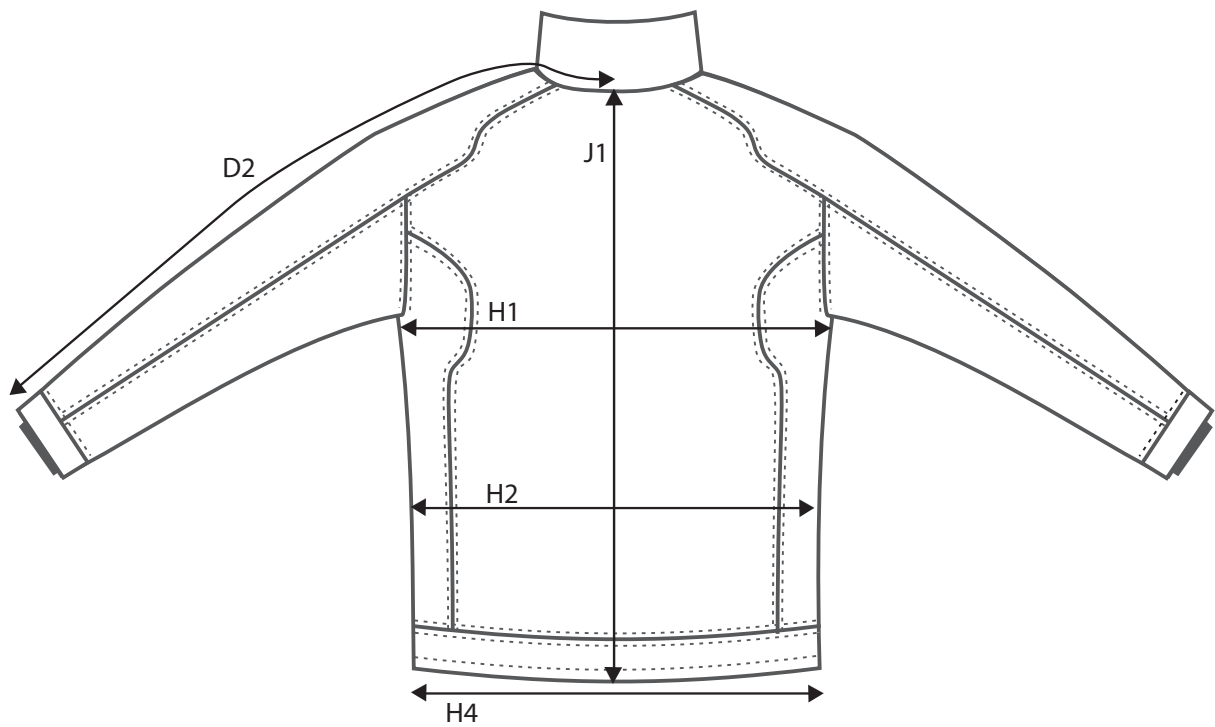




DUXBURY - MEN

HOW TO MESURE THE SIZE AND FIT

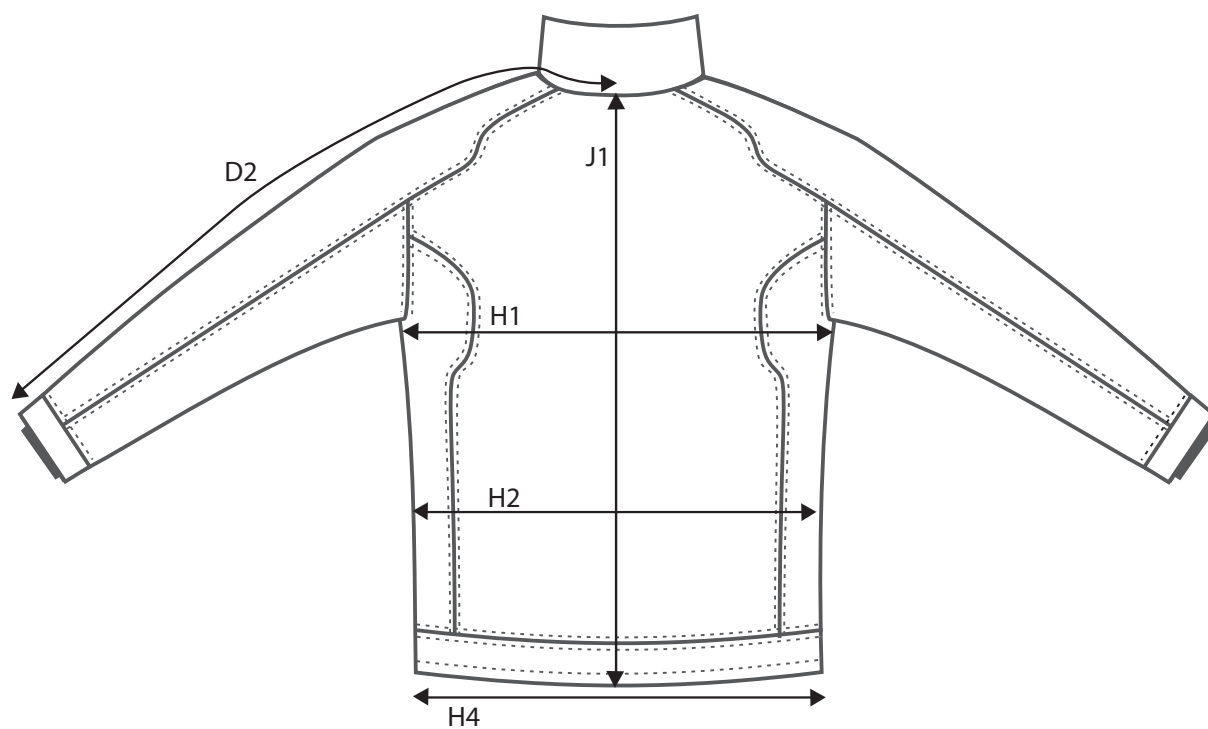


		S	M	L	XL	XXL	XXXL	4XL
CENTRE BACK TO END OF SLEEVE	D2	87	89,5	92	94,5	97	99,5	102
1/2 CHEST WIDTH AT ARMHOLE	H1	54	57	60	63	66	69	72
1/2 BOTTOM WIDTH	H4	50	53	56	59	62	65	68
FULL LENGTH AT CENTRE BACK	J1	67	69	71	73	75	77	79



DUXBURY - WOMEN

HOW TO MESURE THE SIZE AND FIT



		XS	S	M	L	XL	XXL	3XL
CENTRE BACK TO END OF SLEEVE	D2	82,5	83,75	85	86,25	87,5	88,75	90
1/2 CHEST WIDTH AT ARMHOLE	H1	46	48	50	52	54	56	59
1/2 WAIST	H2	43	45	47	49	51	53	56
1/2 BOTTOM WIDTH	H4	49	51	53	55	57	59	62
FULL LENGTH AT CENTRE BACK	J1	60	62	64	66	68	70	72



THE NIMBUS SIZE GUIDE

HOW TO MEASURE

To ensure your complete satisfaction, we recommend that you check your measurements against our sizing chart to determine the right size for you. Make sure to measure directly on the body and then find your size in our size guide.

All measurements are in centimeters.

Feel free to contact our Customer Service at customerservice@nimbusnordic.com if you have additional questions about our sizes.





GENERAL SIZE GUIDE

HOW TO MEASURE

WOMEN

MEASUREMENTS IN CM

	XS	S	M	L	XL	2XL	3XL
CHEST	81 - 84	85 - 88	89 - 92	93 - 98	99 - 104	105 - 110	111 - 118
WAIST	64 - 67	68 - 71	72 - 75	76 - 81	82 - 87	88 - 95	96 - 103
HIP	90 - 93	94 - 97	98 - 101	102 - 107	108 - 113	114 - 119	120 - 127

MEN

	S	M	L	XL	2XL	3XL	4XL	5XL
NECK	37/38	39/40	41/42	43/44	45/46	47/48	49/50	51/52
CHEST	88 - 93	94 - 99	100 - 105	106 - 111	112 - 117	118 - 123	124 - 131	132 - 139
WAIST	76 - 81	82 - 87	88 - 93	94 - 99	100 - 105	106 - 113	114 - 121	122 - 129
HIP	93 - 98	99 - 104	105 - 110	111 - 116	117 - 122	123 - 128	129 - 136	137 - 144

UNISEX

	XXS	XS	S	M	L	XL	2XL	3XL	4XL
CHEST	82 - 85	86 - 89	90 - 93	94 - 99	100 - 105	106 - 111	112 - 117	118 - 123	124 - 131
WAIST	64 - 69	70 - 75	76 - 81	82 - 87	88 - 93	94 - 99	100 - 105	106 - 113	114 - 121
HIP	89 - 92	93 - 96	97 - 100	101 - 104	105 - 110	111 - 116	117 - 122	123 - 128	129 - 136