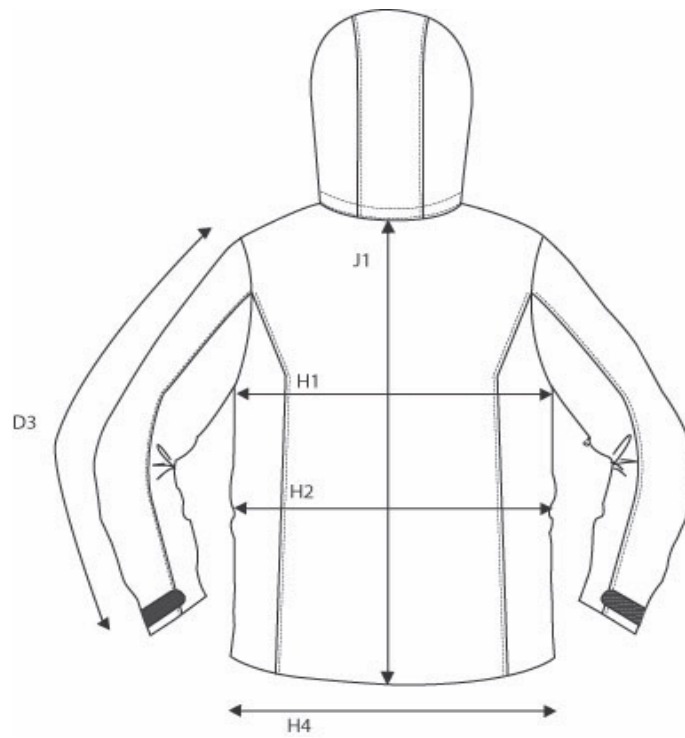




WHITESTONE - MEN

HOW TO MESURE THE SIZE AND FIT

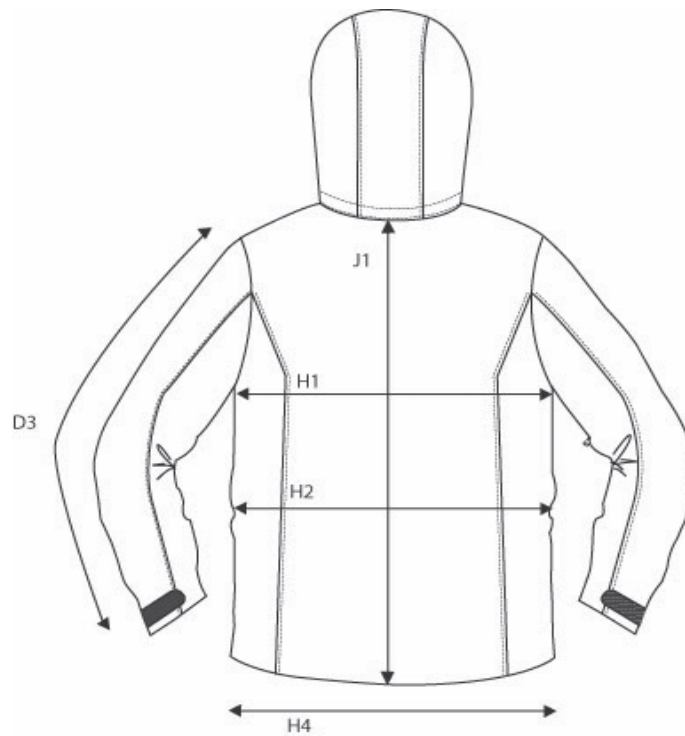


		S	M	L	XL	XXL	XXXL	4XL
SLEEVE LENGTH FROM SHOULDERSEAM	D3	67	68	69	70	71	72	73
1/2 CHEST WIDTH AT ARMHOLE	H1	56	59	62	65	68	71	74
1/2 WAIST	H2	54	57	60	63	66	69	72
1/2 BOTTOM WIDTH	H4	54	57	60	63	66	69	72
FULL LENGTH AT CENTRE BACK	J1	71	74	77	80	83	86	89



WHITESTONE - WOMEN

HOW TO MESURE THE SIZE AND FIT



		XS	S	M	L	XL	XXL	3XL
SLEEVE LENGTH FROM SHOULDERSEAM	D3	63	64	65	66	67	68	69
1/2 CHEST WIDTH AT ARMHOLE	H1	50	53	56	59	62	65	69
1/2 WAIST	H2	45	48	51	54	57	61	65
1/2 BOTTOM WIDTH	H4	51	54	57	60	63	66	70
FULL LENGTH AT CENTRE BACK	J1	68	70	72	74	76	78	80



THE NIMBUS SIZE GUIDE

HOW TO MEASURE

To ensure your complete satisfaction, we recommend that you check your measurements against our sizing chart to determine the right size for you. Make sure to measure directly on the body and then find your size in our size guide.

All measurements are in centimeters.

Feel free to contact our Customer Service at customerservice@nimbusnordic.com if you have additional questions about our sizes.





GENERAL SIZE GUIDE

HOW TO MEASURE

WOMEN

MEASUREMENTS IN CM

	XS	S	M	L	XL	2XL	3XL
CHEST	81 - 84	85 - 88	89 - 92	93 - 98	99 - 104	105 - 110	111 - 118
WAIST	64 - 67	68 - 71	72 - 75	76 - 81	82 - 87	88 - 95	96 - 103
HIP	90 - 93	94 - 97	98 - 101	102 - 107	108 - 113	114 - 119	120 - 127

MEN

	S	M	L	XL	2XL	3XL	4XL	5XL
NECK	37/38	39/40	41/42	43/44	45/46	47/48	49/50	51/52
CHEST	88 - 93	94 - 99	100 - 105	106 - 111	112 - 117	118 - 123	124 - 131	132 - 139
WAIST	76 - 81	82 - 87	88 - 93	94 - 99	100 - 105	106 - 113	114 - 121	122 - 129
HIP	93 - 98	99 - 104	105 - 110	111 - 116	117 - 122	123 - 128	129 - 136	137 - 144

UNISEX

	XXS	XS	S	M	L	XL	2XL	3XL	4XL
CHEST	82 - 85	86 - 89	90 - 93	94 - 99	100 - 105	106 - 111	112 - 117	118 - 123	124 - 131
WAIST	64 - 69	70 - 75	76 - 81	82 - 87	88 - 93	94 - 99	100 - 105	106 - 113	114 - 121
HIP	89 - 92	93 - 96	97 - 100	101 - 104	105 - 110	111 - 116	117 - 122	123 - 128	129 - 136